

Capability Statement

Increased Yield at Lower Cost

In the global commodities market, it is essential that information systems deliver reliable, accurate decision making information at the lowest sustainable cost of ownership.

Managers in the resources sector need to make faster, more accurate decisions weighing up a raft of competing concerns including people, safety, cost, environment, plant, and yield with remarkable speed and accuracy.

Managers expect to be served by information systems professionals who combine technical experience with a thorough understanding of the operations, growth drivers and regulatory considerations within the asset management industry.

Principal consultants in Team Tech are domain specialists that draw on at least 12-15 years operational experience in mining and minerals processing.

Consulting expertise includes:

- Process control integration
- Metallurgical Accounting
- Mass and energy balancing
- Production optimization
- Plant and equipment optimization
- Supply chain integration
- Maintenance optimization
- Systems design and development
- Systems integration and reporting
- ERP project implementations

Team Tech consultants will engage with you to define business and process improvement initiatives. Each initiative will be planned, scrutinised and cost justified to ensure alignment with your company goals and operating plans.



Focus

Team Tech has delivered services and software to the resources sector since 1998.

Our mission is to enable our customers to optimize the return on assets through the efficient use of information technology.

That focus includes:

- Information systems strategies that align corporate and operational requirements at the lowest sustainable cost of ownership
- Increased efficiency in plant, people and production processes using reliable data and software.
- Accurate KPIs and reports for more effective operating decisions.

Competitive Advantage

Competitive advantage is created by improving the efficiency of plant, people and processes at a lower cost point:

1. Experienced consultants understand site issues
2. Reliable source information is used consistently in each application and report ... a single, auditable source of data ... reducing cost and confusion
3. Operating issues effecting data quality are made visible and therefore more manageable
4. Better utilisation of plant, people and process equates to higher yield at a lower cost.

Industry Experience

Team Tech consultants have worked with:

Alumina	Alcoa World Alumina
Copper	Western Metals / Adytia Birla
Diamonds	DeBeers Canada, Diavik
Gold	Newcrest, GoldCorp, KCGM, Oxiana
Industrial	Castech GoCrete
Iron Ore	Rio Tinto, Mount Gibson
Manganese	OM Manganese
Nickel	Minara, SGS, Norilsk Process Tech
Oil	BP Refinery, ROC Oil

Project Methodology

Team Tech uses the Agile Project Methodology for problem definition, solution evaluation, system selection, application development, implementation and support.

- Phase 1: Requirements definition
 - Use case definitions
 - Preliminary design and
 - +/- 30% cost estimate
- Phase 2: Detailed design
 - Use case, workflows, data-flow diagrams
 - Business process maps
 - Project Plan
 - Specifications, Schedule, Budget, Controls
 - +/- 10% cost estimate
- Approval: Business case
 - Management proposal and presentation
- Phase 3: Construction
 - Factory testing
- Phase 4: Site installation
 - Configuration workshops
 - Key user training
 - Site acceptance testing
- Phase 5: End-user training
 - Business process change
 - Role redefinitions
- Phase 6: Reporting
- Phase 7: Handover
 - Sign Off
 - Support
 - Benefits review



Services Delivered

The following range of services have developed to meet the changing needs of our clients in Australia and over-seas:

- Business Analysis & Problem Definition
 - Future states and feasibility studies
 - Requirements definition
 - Business use-case models
 - Business process integration
 - Data models and glossaries
 - Project planning and estimating
 - Cost models
 - Business continuity
- Solution Selection & Application Development
 - Detailed requirements definition
 - Application selection, negotiation and implementation
 - Application development
- Project Management
 - Program and project management
 - Project execution ... safety, manpower, cost, schedule, milestones, risk and customer satisfaction
 - Reporting
- Change Management
 - Readiness analysis
 - Communication
 - Sponsor management
 - Training
 - Org structure change and role redefinitions
- Systems Consulting & Integration
 - Application and data integration
 - Reporting & KPI integration
- Application Support
 - 2nd and 3rd level helpdesk support
 - Application configuration
 - Application tips and tricks
- Infrastructure Management
 - Infrastructure audits
 - Infrastructure operating cost reviews
 - Infrastructure planning and advice
 - Infrastructure management
 - System and data redundancy planning
 - Disaster recovery planning and testing

Complementary Applications

A suite of complementary applications have been developed to integrate with business systems such as Ellipse, Microsoft Dynamics, Oracle eBusiness and Pronto.

CARS™ - Contractor Approval & Reporting System

CARS ensures that contractors don't overstay their welcome. Contractors requisitioned for site operations are managed from the point of approval through the execution of work orders and subsequent departure.

IntelliPlant™ - Data Integration Server

IntelliPlant is an operational data layer for application integration and reporting. Industry standard interfaces ensure timely, accessible data for consistent use across all information systems and reports.

Isolate™ - Permit to Work System

Safe work practices are essential to continued operations. Isolate enforces checkpoints in the shutdown and hand-over of plant for inspection and maintenance. Risk and liability is reduced through safe work practices.

MineVision™

MineVision reduces 80% of the time spent collating mining production statistics. Production coordinators can focus on tuning the daily and weekly mining schedules to meet annual operating plans.

Pulse™ - Production Uptime & Downtime accounting

Pulse provides insight into plant down-time causes and production improvement initiatives.

TABS™ - Travel & Accommodation Booking System

TABS reduces the number administrative staff juggling flights and accommodation for remote site personnel. TABS interfaces directly with airline systems, site security and ERP rostering software to automate routine bookings, camp management, catering, cleaning and muster sheets.

Charts & Reports

A library of KPI reports is available for inclusion in your company portal .

Personnel can browse quickly through secure web pages with minimal training and drill down on charts and reports to explore underlying trends and causes.

Safety

- Understand and manage safety activity
- Drill down on hazards, incidents and leading measures
- Review and approve safety statistics before inclusion in company reports
- Increase safety awareness

Mining Efficiency

- Equipment utilisation and efficiency
- Load and Haul productivity by technique
- Operator effectiveness
- Performance against monthly and daily plans

Maintenance

- Planned versus unplanned maintenance analysis
- Schedule loading and manpower availability
- Preventative maintenance analysis
- Backlog management

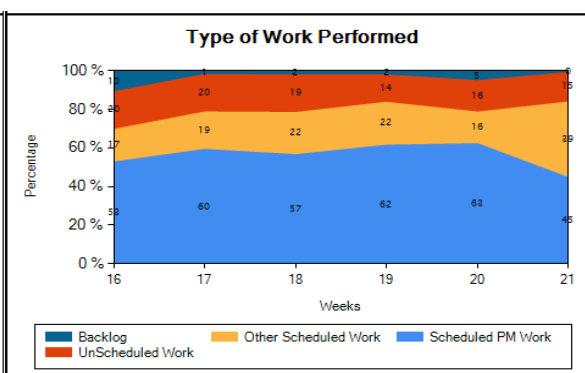
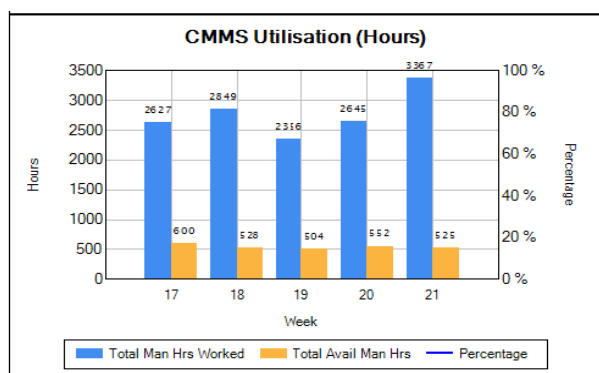
Operations

- Production throughput, recovery and waste
- Production loss accounting
- Overall Equipment Effectives

Products in Development

- MetVision - Metallurgical Accounting
- Training assessment and certification - ensure that people have the right level of certification for each task.
- ProcessVision - Plant and process data visualization

Applications adopt fashionable "look & feel" standards through the use of current web-browser development and reporting tools.



Project Controls & Risk Mitigation

Team Tech delivers weekly project updates and monthly project reports using PMI standards. Each assignment is managed for cost, time and scope using plans, budgets and detailed work break-down structures.

Weekly progress reports record activities executed against plan and provide opportunity to fine tune performance. Regular reports build understanding in the process and better adoption of the finished product.

Monthly performance reports display a greater level of detail and provide opportunity to tune the project success. Key elements include:

- Safety - team exposure rates and incidents statistics
- Scope - defined boundaries to contain cost creep
- Schedule - defined milestones to maintain momentum
- Expenditure - actuals, commitments and est. to complete
- Manpower and team morale - team dynamics
- Communication - stakeholder and sponsor management
- Risk - managing unwanted variables
- Variations - requirements can change over time
- Customer satisfaction - the important measure of success

Each project is assigned a Team Lead or a Project Manager depending on the size and complexity of the assignment. Customers can engage with this single point of accountability to ensure process compliance and a success result.

Industry Standards and Data Integrity

Managers who trust source data make more efficient and effective decisions.

Data integrity is preserved through disciplined systems analysis and development techniques. Industry standard data-base technologies such as Microsoft SQL Server and Oracle are used to store and manage data.

Data interfaces are generated and maintained using industry standard SSIS, PL-SQL, XML, SOA cartridges and OPC gateways.

Team Tech also adopts ITIL and infrastructure change management disciplines.

Contact TeamTech at:

Gemcom Software
 Tel: +61 8.9420.1333
 Fax: +61 8.9420.1350
 Email: teamtech@gemcomsoftware.com
 Web: www.gemcomsoftware.com/teamtech

Plant To Board Room Integration

